

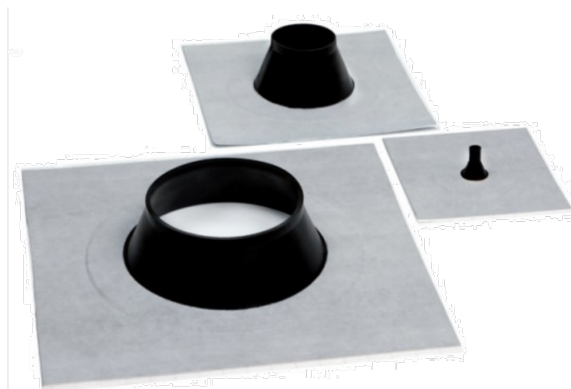
ALU-BUTYL CUFFS

Cuffs are used to create a permanent seal around penetrations in the radon barrier. Adheres to all system membranes, as well as to wood, steel, OSB and plywood. When using on porous and/or absorbent surfaces, you must first prime.

Made with finger lift for easy assembly.

Follow radon instructions 233 and 247 from SBI, as well as membran-erfa.dk

By working the butyl tape firmly with putty, the adhesion is improved by up to 60%.



TECHNICAL CHARACTERISTICS

Characteristic	Standard	Value
Materiale		Alu
Glue*		Butyl
Liner		Siliconized paper
Rubber	DIN ISO 48	EPDM 60 ± 5 Shore A
Temp. area		-30° - +100°C
Working temperature	Air	+5° - +30°C
Working temperature	tape	+15° - +25°C
Stock		Dry and frost-free,
storage time		At +15 - 25°C cirka 5 years

Limitations: all surfaces must be clean, dry and free of dust, silicone, oil, frost and frost. Mount with out folds.